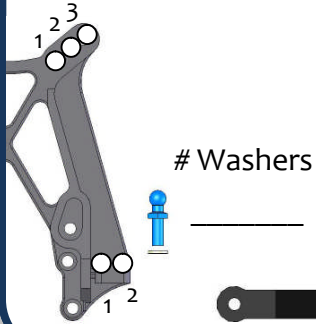




Driver: \_\_\_\_\_ Date: \_\_\_\_\_

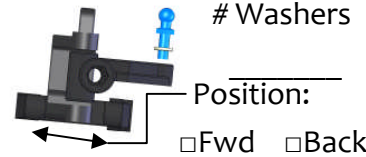
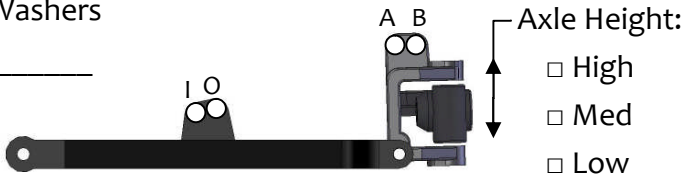
Track/Event: \_\_\_\_\_

### Front Suspension



Ride Height: \_\_\_\_\_  
 Camber: \_\_\_\_\_° Toe: \_\_\_\_\_°  
 Ackerman:  Forward  Back

Servo:  Fwd  Back  
 Axles:  Trailing  Inline  
 Caster Block:  
 20°  25°  30°

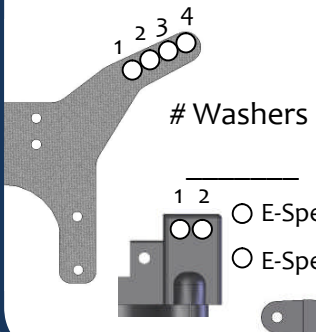


### Front Shocks

	Spring	Piston	Oil
AE			
Losi			
Kyosho			
HB			

Shock Length: \_\_\_\_\_  
 Compressed Length: \_\_\_\_\_

### Rear Suspension



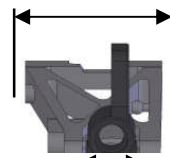
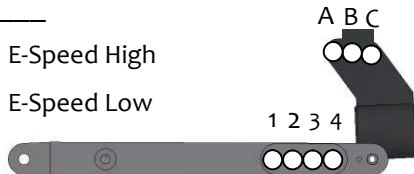
Ride Height: \_\_\_\_\_  
 Camber: \_\_\_\_\_°  
 Transmission Height: \_\_\_\_\_

Sway Bar: \_\_\_\_\_

Arm Position:

Back  Mid  Fwd

E-Speed High  
 E-Speed Low

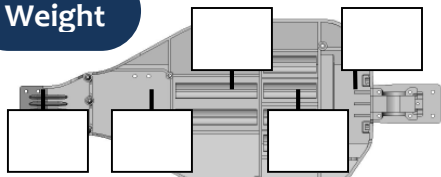


### Rear Shocks

	Spring	Piston	Oil
AE			
Losi			
Kyosho			
HB			

Shock Length: \_\_\_\_\_  
 Compressed Length: \_\_\_\_\_

### Weight



Total Weight: \_\_\_\_\_  
 F/R Bias: \_\_\_\_\_ / \_\_\_\_\_

### Notes/Rants/Excuses

\_\_\_\_\_  
 \_\_\_\_\_  
 \_\_\_\_\_  
 \_\_\_\_\_

Battery: \_\_\_\_\_ Motor: \_\_\_\_\_ Gearing: \_\_\_\_\_ / \_\_\_\_\_